



bel etage



bel etage

25th AUTUMN SALON 2024

SALES EXHIBITION
IN BOTH GALLERIES

Detailed descriptions of the objects presented in this catalogue are available for download in German and English from our website www.beletage.com.
Upon request, we will also be pleased to send you these descriptions by post or email.
All measurements are approximate and for information only.

The German National Library lists this publication in the German National Bibliography.

IMPRINT

Publisher: bel etage Kunsthandel GmbH, Vienna
Conception and organisation: Wolfgang Bauer
Object descriptions, expert: Wolfgang Bauer
In cooperation with: Christiane Gastl, MA, Marlene Kühnhackl, BA, Karolina Jasek
BA, Mag. Agnes Prosch, Mag. Dr. Regine Vaget
Translation: Mag. Sabine Hübler
Proofreading: Mag. Sabine Hübler
Photos: August Lechner
Graphic design: Marlene Kühnhackl, BA
Print: Print Alliance HAV Produktions GmbH, Bad Vöslau
All rights reserved
© bel etage, Vienna 2024
ISBN-978-3-902117-46-5
Front cover: Cat. no. 44
Back cover: Cat. no. 18

Detailed descriptions of the objects presented in this catalogue are available for download in German and English from our website www.beletage.com.

A-1010 Vienna. Mahlerstraße 15

bel etage, Kunsthandel GmbH · phone: +43 1 512 23 79 · fax: ext. 99 · office@beletage.com · www.beletage.com

A-1010 Vienna, Dorotheergasse 12



Ladies and Gentlemen,
Dear Friends, Art Lovers and Collectors,

In my 49th year as art dealer, I have the honour of presenting my 25th Autumn Salon. At the same time, I have the pleasure of announcing the 10th anniversary of our bel etage branch at Dorotheergasse 12. In the heart of Vienna's Antiques Quarter, we have been presenting new acquisitions and museum quality objects since 2014, providing insights into Austria's art and design history, inspired and honoured by the interest of our constantly growing cosmopolitan clients, who have remained loyal to us since the very beginnings of bel etage in Pressgasse.

Putting together the objects for the 25th Autumn Salon has brought back memories of my first catalogue in 2000. The selection of works of art, the descriptions, the translation into English – at the time still without proofreading – proved to be quite a challenge, which I was only able to manage thanks to the help and assistance of friends. Creating an outstanding product required much more effort, considering the technical opportunities available at the time. Today, many of my catalogues can be found in public and private collections as well as in university libraries, and very often serve as reference literature. Each art object tells its own story and also reflects my decades of passion for collecting, academic research and professional expertise.

Discovering new objects – for myself and for you – is both inspiration and motivation for me: In this year's Autumn Salon I thus have the pleasure of presenting exquisite pieces of furniture created by such important Viennese cabinetmakers as Portois & Fix, an outstanding dining room ensemble in thuja burl wood by the Hoffmann student Mauritius Hergesell, tablecloths by Otto Prutscher and skilfully designed Lötz vases. We present paintings of the highest quality by Carl Moll, Josef Stoitzner, Rudolf Jung, Max Kahrer and prints from the School of Franz Cizek as well as lamps by Otto Wagner and, of course, objects by Josef Hoffmann and Wiener Werkstätte. This selection, characterised by exceptional craftsmanship and attention to detail, may in itself be considered a work of art, with Werkstätte Hagenauer pointing the way to modernity.

I could not have achieved all this without the great support of my bel etage team, the furniture and metal conservators and restorers, the painting, print and graphics conservators, my frame maker and my friends from the art trade whose support and assistance I value so highly. I am also in close expert contact with friends who share their extensive knowledge of art history, some working in important museums and others already in "active" retirement. But without your support, Dear Friends, Art Lovers and Collectors, Interior Designers and Supporters, I would not be able to keep all this going. I would therefore like to use this foreword as an opportunity to thank each and everyone of you and assure you of my highest esteem and appreciation.

Sincerely yours,
Wolfgang Bauer

Wolfgang Bauer

JOSEF STOITZNER

Vienna 1884 – 1951 Bramberg im Pinzgau

01. SPRING ON THE HILLS

Signed on lower left: STOITZNER JOSEF 1917

Oil on canvas, cleaned and varnished, newly framed, excellent original condition

Picture size: 90 x 100 cm

Frame size: 97 x 108 cm

The painting was included in the artist's catalogue raisonné as number WVJS 1.3.82.

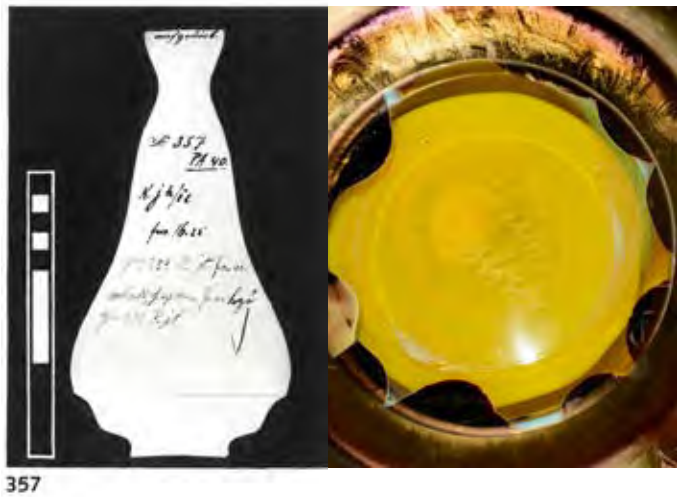
In 1911, Stoitzner created a similar painting depicting early spring on the hills. Our painting was probably created in the Alpine foothills, probably in the Bucklige Welt region.

Provenance: private property, Austria

Ref.: Kolhammer & Mahringer, fine arts (ed.): Josef Stoitzner – Das Gesamtwerk, catalogue raisonné, Vienna 2019; H. Fuchs, Die österreichischen Maler 1881 – 1900, vol. 2, Vienna 1977, K 109



FRANZ HOFSTÖTTER
Munich 1871 – 1958 Bachern
JOHANN LÖTZ WITWE



02. VASE

Designed by: Franz Hofstötter, 1900
Executed by: Johann Lötze Witwe, Klostermühle, model no. 357
Décor: metallgelb Phänomen Gre 358
Shape: prod. no. 1900-357
Signed: Loetz Austria

Colourless glass cased in opalescent glass, base with dark red-brown band, salmon-red mouth, bulbous metallic-yellow side, the whole covered with various trailed silver-yellow bands, excellent condition

H 22 cm
Franz Hofstötter was commissioned by glass manufacturer Lötze to design shapes and décors for a number of vases for the 1900 Paris World Exhibition.

Provenance: private property, USA
Ref.: H. Ricke (ed.), Lötze, Böhmisches Glas 1880–1940, Munich, 1989, vol. 1, p. 123; vol. 2, p. 90



JOHANN LÖTZ WITWE



03. VASE

Designed and executed by: Johann Lötz Witwe, Klostermühle, for E. Bakalowits Söhne, Vienna
Décor: Luna
Shape: Prod. no. 85/3678

Transparent glass, pale green ground, blue inner casing spreading from top, matte iridescent, excellent condition

H 28 cm

Provenance: private property, Austria

Ref.: J. Mergl/E. Ploil/H. Ricke, Löt, Böhmisches Glas 1880–1940, Hatje Cantz Verlag und Neue Galerie New York, 2003, p. 293 (décor); H. Ricke (ed.), Löt, Böhmisches Glas 1880–1940, Munich, 1989, vol. 2, p. 271 (paper pattern)

ROBERT HOLUBETZ
1890 – unknown
JOHANN LÖTZ WITWE



04. VASE

Designed by: Robert Holubetz, 1901/02
Executed by: Johann Lötz Witwe, Klostermühle, for E. Bakalowits Söhne, Vienna
Décor: Luna optisch
Shape: 1901/02, prod. no. Com. 85/3868

Greenish ground with spreading inner blue casing, excellent condition

H 32 cm

This décor was executed exclusively for Bakalowits.

Provenance: private collection Christian Clausen, Austria

Ref.: J. Mergl/E. Ploil/H. Ricke, Loetz, Böhmisches Glas 1880–1940, Hatje Cantz Verlag und Neue Galerie New York, 2003, vol. 1, p. 187 (décor); vol. 2, p. 286 (paper pattern)

OTTO WAGNER
1841 – Vienna – 1918



05. A PAIR OF CEILING LIGHTS FOR THE VIENNA METROPOLITAN RAILWAY CARS

Designed by: Otto Wagner, Vienna, before 1900

Brass, glass shades, very good original condition

H 18 cm, Ø 30.5 cm

As the most important Austrian urban planner of the time, Otto Wagner was commissioned with the planning and construction of the Vienna metropolitan railway system, which he implemented between 1894 and 1901. As Wagner was also responsible for designing the railway carriages, he designed this ceiling light as part of the railway cars' interior decoration.

Provenance: private property, Austria



GEORG KLIMT
1867 – Vienna – 1931
ANTON POSPISCHIL



06. EXTRAORDINARY VIENNESE ART NOUVEAU DESK

Designed in: Vienna, around 1900

Executed by: Anton Pospischil, Kunstmöbeltischlerei Wien
Fittings designed and executed by: Georg Klimt

African mahogany veneer on pine, drawers in solid maple, doors with two chased copper relief panels with stylized floral pattern, copper fittings, left: "English" (semi-open front) drawers, right: three drawers with brass handles, desktop newly covered with blue leather, surface professionally repolished, excellent condition

First-class Viennese cabinetmaking

H 88 cm, W 150 cm, D 82 cm

Alongside realising Josef Hoffmann's furniture designs for the Paris World Exhibition in 1900, Anton Pospischil obviously worked closely with Georg Klimt. Klimt was commissioned by Pospischil to design a series of fittings for some pieces of his furniture, which Pospischil repeatedly executed with slight variations, adapted to the respective functionalities and requirements. Many of Pospischil's pieces thus feature similar fittings and reliefs signed by Georg Klimt.

Provenance: private property, Austria



VIENNA SCHOOL OF ARTS and CRAFTS attr.

07. DRAWING ROOM TABLE

Designed by: Vienna School of Arts and Crafts attr.,
around 1903
Executed in: Vienna, around 1903

Mahogany solid and veneer, inlays in maple, surface
professionally repolished, small repairs, 4 column-shaped
legs slightly out of alignment, brass fittings, very good
restored condition
Excellent Viennese craftsmanship

H 78 cm, W 78 cm, D 78 cm

Provenance: private property, Austria



VIENNA SCHOOL OF ARTS and CRAFTS attr.

08. SHOWCASE

Designed by: Vienna School of Arts and Crafts attr.,
around 1903
Executed in: Vienna, around 1903

Mahogany solid and veneer, inlays in maple, surface
professionally repolished, small repairs, glass doors and
mirror cut and faceted, brass fittings, excellent condition

Excellent Viennese craftsmanship

H 191 cm, W 95 cm, D 42 cm

Many wealthy Austrian master cabinetmakers sent

their children and successors to arts and crafts schools. Even before 1900, the Vienna School of Arts and Crafts, founded by Rudolf Eitelberger in 1864, was the best of these educational institutions. Among the many important artists and architects who taught there were Josef Hoffmann, Koloman Moser, Alfred Roller and Michael Powolny. With pride, it may therefore be said that the Vienna School of Arts and Crafts was the birthplace of Viennese Modernism. Even beyond Bauhaus, groundbreaking artists from this school have, together with the numerous Wagner students, left their mark on Europe to this very day.

Provenance: private property, Austria



09. CEILING LIGHT

Designed and executed in: Vienna, around 1905

Cast brass, polished and stove enamelled, original cut and faceted glass, excellent condition

H 22 cm, Ø 32 cm

Excellent Viennese craftsmanship

Provenance: private property, Austria



JOSEF HOFFMANN
Brtnice 1870 – 1956 Vienna
ANTON POSPISCHIL



10. LARGE SIDEBOARD

Designed by: Josef Hoffmann, Vienna, 1900/1901

Executed by: Anton Pospischil, Kunstmöbeltischlerei Wien

Solid rosewood and veneer on coniferous wood, linear inlay in boxwood, mahogany wood interior, four abstract floral carvings in rosewood on the side and rear panels, numerous cut and faceted glass elements, fittings nickel-plated, surface slightly repolished, cut and faceted mirrors, very good original condition

H 174/91 cm, W 226 cm, D 42.5/77 cm

Our large sideboard is a variation of the dining-room centrepiece, Josef Hoffmann designed in 1899/1900 for

the World Exhibition in Paris. The four abstract floral carvings affixed to the side elements' rear panels as well as the side elements themselves are reminiscent of the formal language of Charles Rennie Mackintosh who, in November 1900, took part in the VIIIth Secession exhibition along with his wife, Margaret McDonald, and numerous outstanding artists.

The smooth door fronts without metal panelling and the nickel-plated brass fittings lend this piece a much more modern appearance than was enjoyed by the large sideboard exhibited in Paris.

Provenance: private property, Austria

Ref.: comp. Das Interieur, vol. 1, 1900, p. 33, fig. 19

HANS VOLLMER
 Berlin 1878 – 1969 Leipzig
GUSTAV GILGEN
 Cabinetmaker, Vienna



11. TRANSFORMABLE GAMING TABLE

Designed by: Hans Vollmer, Vienna, around 1900
 Executed by: Gustav Gilgen

Solid oak and veneer, stained red, retouches, surface slightly cleaned and polished, copper-plated brass fittings, tabletop with original leather, signs of usage, very nice original condition

H 70.5 cm, W 49 cm, D 49 cm,
 extendable to: W 60.4 cm, D 49.5 cm

The small table, which can be transformed into a gaming table by folding out the upper top that is divided into 4 triangles, is a very early work by Vollmer and was almost certainly part of the home furnishings depicted in the architectural magazine *Das Interieur*, vol. I, 1900, on pages 113 ff.

Provenance: private property, Germany

Ref.: comp. *Das Interieur*, vol. I, 1900, p. 113 ff



ROBERT FIX
 1877 – Vienna – 1945
PORTOIS & FIX



12. SIDEBOARD

Designed by: Robert Fix, Vienna, around 1901
 Executed by: Portois & Fix, Vienna
 Marked on locks: Portois & Fix, Wien

Rosewood solid and veneer, Parnassus leaf ornament inlay in maple and mahogany, interior elm wood, surface professionally repolished, brass fittings, base faced in brass, original cut and faceted glass panels, central pull-out tray, two locks repaired, high-quality Viennese cabinetmaking, excellent condition

H 180 cm, W 210 cm (58/94/58), D 43/47 cm

Provenance: private property, Austria

Ref.: M. Wenzl-Bachmayer, *Die Firma Portois & Fix, Pariser Esprit und Wiener Moderne*, Vienna, 2008, p. 22

OTTO PRUTSCHER attr.
1880 – Vienna – 1949
HERRBURGER & RHOMBERG



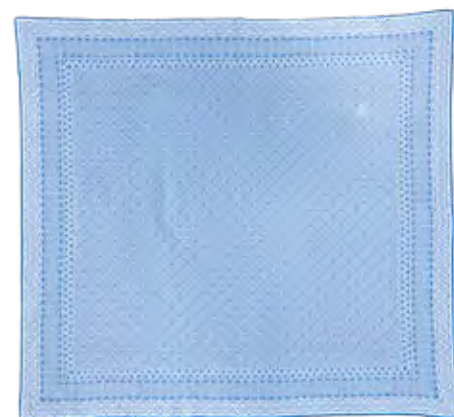
13. TABLECLOTH

Designed by: Otto Prutscher attr., around 1910
Executed by: Herrburger & Rhomberg, Dornbirn, Austria

Cotton, hollow woven, blue, 2 non-professionally executed repairs approx. 4 cm and 2 cm, 3 small stains, otherwise good used condition
133 x 143 cm

Provenance: private property, Austria

Ref.: comp. C. Duit, H. & F. Schedlmayer (ed.): Otto Prutscher, 1880-1949, Architekt und Designer zwischen Tradition und Moderne, vol. 2, p. 91



OTTO PRUTSCHER attr.
1880 – Vienna – 1949
HERRBURGER & RHOMBERG



14. TABLECLOTH

Designed by: Otto Prutscher attr., around 1910
Executed by: Herrburger & Rhomberg, Dornbirn, Austria

Cotton, double weave, hollow woven, 1 hole (approx. 1 cm²), 5 small, slightly damaged spots (approx. 4 cm²), a few frays at the edges, otherwise good used condition
136 x 136 cm

Provenance: private property, Austria

Ref.: comp. C. Duit, H. & F. Schedlmayer (ed.): Otto Prutscher, 1880-1949, Architekt und Designer zwischen Tradition und Moderne, vol. 2, p. 91



ADOLF LOOS
Brno 1870 – 1933 Kalksburg near Vienna
FRIEDRICH OTTO SCHMIDT



1171 ma, yfeyvovnuT vavnuO nennnizvnuH mi nkofoinidvobdē 12



15. WRITING DESK

Designed by: Adolf Loos
Executed by: Friedrich Otto Schmidt, Vienna, from 1900 onwards

Solid mahogany and veneer, solid beech wood, dyed to rosewood, slightly refreshed approximately 20 years ago, surface slightly refreshed, original brass fittings, 5 original brass keys, inside left 3 "English" (semi-open front) drawers, right 3 drawers, very good original condition

H 78 cm, W 160 cm, D 80 cm

In many of his furnishing commissions, Adolf Loos used desks like this in slight variations. Our desk's formal language

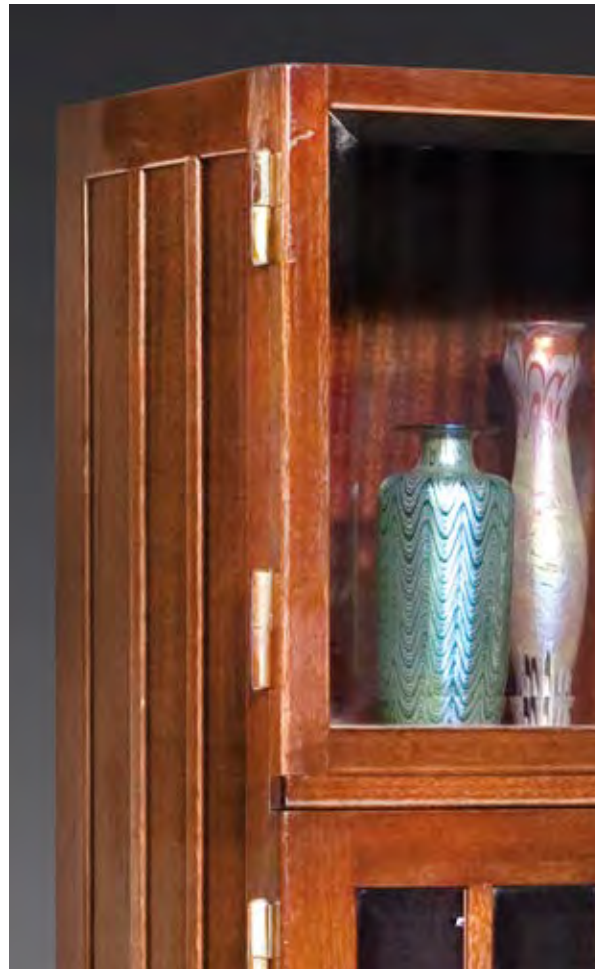
corresponds to Loos' furnishings for Gustav Turnovsky's study in 1912. The structure of the base, the panelling as well as the arrangement of the drawers and the front doors are almost identical. Only the panelling on the sides, the closed back with its two storage compartments, and the fittings differ. Furthermore, the entire writing area on the desktop is also veneered. We are not aware of any design drawing that would not conclusively indicate Loos as this writing desk's designer.

Provenance: private property, Austria

Ref.: E. B. Ottillinger, Adolf Loos, Wohnkonzepte und Möbelentwürfe, p. 59



ADOLF LOOS
Brno 1870 – 1933 Kalksburg near Vienna
MIKSA SCHMIDT



16. SHOWCASE

Designed by: Adolf Loos, around 1902
Executed by: Miksa Schmidt, Budapest
Marked on the lock: Miksa Schmidt Budapest

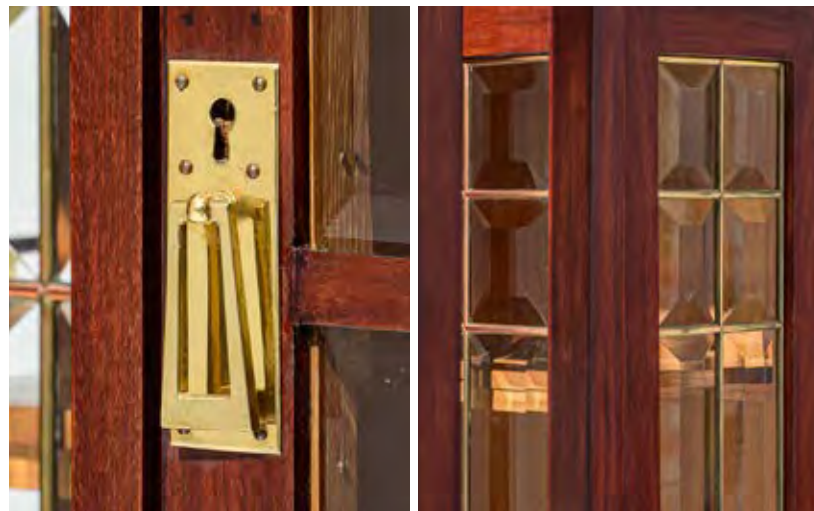
Solid mahogany and veneer, cut and faceted glass,
brass fittings, surface slightly repolished, excellent original
condition

H 187 cm, W 83 cm, D 40 cm

The Friedrich Otto Schmidt company (and its Budapest branch) was, and still is, one of the most important cabinetmakers in Vienna. It also produced furniture modelled on French and English designs. The company has become world famous for furniture based on designs by Adolf Loos, Wilhelm Schmidt and Koloman Moser.

Provenance: private property, Austria





17. SECESSIONIST SHOWCASE

Designed in: Vienna, around 1903
 Executed by: first-class Viennese cabinetmaker

Solid walnut and veneer, dyed to mahogany and polished,
 mahogany veneer interior, glass frames in oak, surface
 professionally repolished approximately 30 years ago, original

cut and faceted glass, brass fittings, very beautiful condition
 First-class Viennese cabinet making

H 187 cm, W 120 cm, D 44 cm

Provenance: private property, Austria



GUSTAV GURSCHNER
 Mühldorf (Bavaria) 1873 – 1971 Vienna
 K. K. KUNSTERZGIESSEREI WIEN attr.



18. THE VICTRESSES

Designed by: Gustav Gurschner, Vienna, around 1905
 Executed by: K. K. Kunsterzgiesserei Wien attr.
 Marked: Gurschner

Zinc cast, tin-plated, very solid and fine cast, marble base replaced, very beautiful condition

Sculpture: H 36 cm, W 23, D 7 cm
 Base: H 4 cm, W 32.5 cm, D 16.5 cm

The Victresses were originally created as caryatids/supports for the upper part of a sideboard. They symbolise the female/victress who supports society, thus representing an early work of art that refers to emancipation.

Sincere thanks to art historian Dr Bernd Ernsting from the Letter Foundation Cologne for this expert opinion.

Provenance: private property, Germany



HANS VOLLMER or WILHELM SCHMIDT
SCHOOL of PROF. JOSEF HOFFMANN
PRAG-RUDNIKER KORBWARENFABRIK



19. TABLE

Designed by: Hans Vollmer or Wilhelm Schmidt, 1903
Executed by: Prag-Rudniker Korbwarenfabrik, from 1903 on, model no. 211, with round top and square base

Solid elm wood and veneer, original woven rattan and original brass globes, excellent original condition

H 77 cm, Ø 61 cm

This table was probably created under the motto of designing "simple furniture". Right from the beginning, Josef Hoffmann's students developed an impressive modernity. It was long assumed that this table was designed by

Hoffmann, as teacher and students inspired one another substantially.

Provenance: private property, Austria

Ref.: original Prag-Rudniker Korbwarenfabrik sales catalogue, plate no. VII

WILHELM SCHMIDT attr.
1880 – Bohemia – after 1928
PRAG-RUDNIKER KORBWARENFABRIK



20. SIDE TABLE

Designed by: Wilhelm Schmidt attr., around 1903
Executed by: Prag-Rudniker Korbwarenfabrik, around 1903, model no. 571

Solid elm wood, woven rattan on tabletop, surface cleaned and slightly repolished, brass screws, very good original condition
H 76 cm, W 70 cm, D 50 cm

Provenance: private property, Austria

Ref.: original Prag-Rudniker Korbwarenfabrik sales catalogue, plate no. VII





21. GRAND EXTENDABLE DINING-ROOM TABLE

Designed and executed by: J. & J. Herrmann, Vienna, around 1905

Solid rosewood and veneer, nickel-plated brass cuffs on the four legs, surface cleaned and slightly repolished, very good original condition

H 80 cm, W 150 cm (extendable to 430 cm), D 124 cm

The table opens up with four extensions (each 70 cm) to 430 cm and offers seating for 14 to 16 persons. When opening the second extension each, supporting legs will automatically unfold and move into place. At 124 cm, the

table's width exceeds the present-day standard of 100 cm by far, offering generous space for table decoration.

Provenance: private property, Austria

Founded in 1878 by Julius and Josef Herrmann, the company produced high-quality furniture from artists' designs and also based on English and French designs. J. & J. Herrmann took part in various exhibitions including in the Austrian Museum of Art and Industry (today's MAK).

Ref.: V. J. Behal, Möbel des Wiener Jugendstils



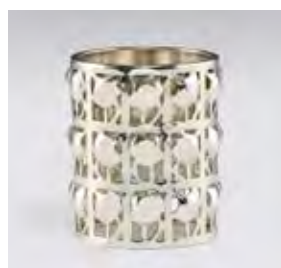


22. THREE PAIRS OF SILVER EGGCUPS

Designed by: Josef Hoffmann, Vienna, 1908
Executed by: Wiener Werkstätte
Marked: rose mark, WW, JH, Austrian hallmark (A for Vienna, 2 for 900/1000)
Silver, ivy leaf pattern
H 5.6 cm

According to the Wiener Werkstätte Archives at the Austrian Museum of Applied Arts (MAK), pattern book 55, a total of 19 eggcups were produced from 4 March 1908 onwards and sold for 24 Kronen each.

Provenance: private property, Germany
Ref.: Archives at the Austrian Museum of Applied Arts (ÖMAK), Wiener Werkstätte pattern book, vol. 55, p. 1048; Wiener Werkstätte vol. IX; special D.K.&D. edition of 1909, vol. no. XXIII, ill. p. 180



23. THREE RARE BOTTLE COASTERS

Designed by: Josef Hoffmann, Vienna, before 1905
Executed by: Wiener Werkstätte, 1905, model no. S 258, from 1905 on
Marked: 1. Ø 7.9 cm: JH, rose mark, WW, Austrian hallmark – head of Diana (A for Vienna, 2 for 900/1000), JH for Josef Holi (silversmith); 2. Ø 8.3 cm: WW, Austrian hallmark – head of Diana (A for Vienna, 2 for 900/1000), 3. Ø 8.3 cm: JH, rose mark, WW, Austrian hallmark – head of Diana (A for Vienna, 2 for 900/1000)

Silver, light signs of use, very good original condition
2 coasters Ø 8.3 cm, 1 coaster Ø 7.9 cm

Provenance: private property, Germany
Ref.: A contemporary photograph is preserved in the Wiener Werkstätte photographic archives at the Austrian Museum of Applied Arts (MAK), Vienna, inv. no. WWF93-49-11; Wiener Werkstätte archives at the MAK, Vienna, design drawing, inv. no. KI 12011-23



RICHARD TESCHNER
Karlsbad 1879 – 1948 Vienna
JOHANN LÖTZ WITWE



24. JUG "MERMAN" WITH SIX GLASS BEAKERS

Designed by: Richard Teschner, 1906
Executed by: Johann Lötz Witwe, Klostermühle,
model no. 4506
Décor: alabaster white with jade green, around 1910

Mould-blown jug, handle with green cock's comb, long,
green moustache, eyes and pupils of yellow and red glass

Jug: H 17 cm
Beaker: H 9.8 cm

Provenance: private property, England

Ref.: J. Mergl/E. Ploil/H. Ricke, Löt, Böhmisches Glas 1880–
1940, Hatje Cantz Verlag, 2003, p. 189, ill. 155



RICHARD TESCHNER
Karlsbad 1879 – 1948 Vienna
JOHANN LÖTZ WITWE



25. JUG "MERMAN" WITH FIVE GLASS BEAKERS

Designed by: Richard Teschner, 1906
Executed by: Johann Lötz Witwe, Klostermühle,
model no. 4506
Décor: alabaster white with jade green, around 1910

Mould-blown jug, handle with green cock's comb, long,
green moustache, eyes and pupils of yellow and red glass

Jug: H 17 cm
Beaker: H 9.5 cm

Provenance: private property, England

Ref.: J. Mergl/E. Ploil/H. Ricke, Löt, Böhmisches Glas 1880–
1940, Hatje Cantz Verlag, 2003, p. 189, ill. 155



MAX KAHRER

Timisoara (Romania) 1878 – 1937 Klosterneuburg near Vienna



26. THE DOME OF KLOSTERNEUBURG MONASTERY

Signed on lower right: M. KAHRER 1910

Oil on canvas, cleaned and varnished, newly framed, excellent original condition

Picture size: 71 x 45.7 cm

Frame size: 75 x 49 cm

Provenance: private property, USA

Ref.: H. Fuchs, Die österreichischen Maler des 19. Jahrhunderts, vol. 2, Vienna, 1973, K 94

MARCEL KAMMERER

Vienna 1878 – 1959 Montreal

GEBRÜDER THONET



27. A PAIR OF SIDE TABLES

Designed by: Marcel Kammerer, Vienna, 1905

Executed by: Gebrüder Thonet, model no. 8040, Vienna, from 1905/7 on

Bent beechwood, surface dyed to rosewood, professionally repolished, brass fittings, legs with brass cuffs, very good condition

H 78.5 cm, W 52 cm, D 52 cm

Provenance: private property, Austria

Ref.: Das Interieur, vol. VI, p. 1905, p. 82; Gebrüder Thonet sales catalogue, 1 Sep 1904, supplement 1 Oct 1907, ill. p. 143; G. Renzi, Il mobile moderno, Gebrüder Thonet Vienna, Jacob & Josef Kohn, Milan, 2008, p. 142



OTTO PRUTSCHER
1880 – Vienna – 1949
HERRBURGER-RHOMBERG for WIENER WERKSTÄTTE



28. TABLECLOTH

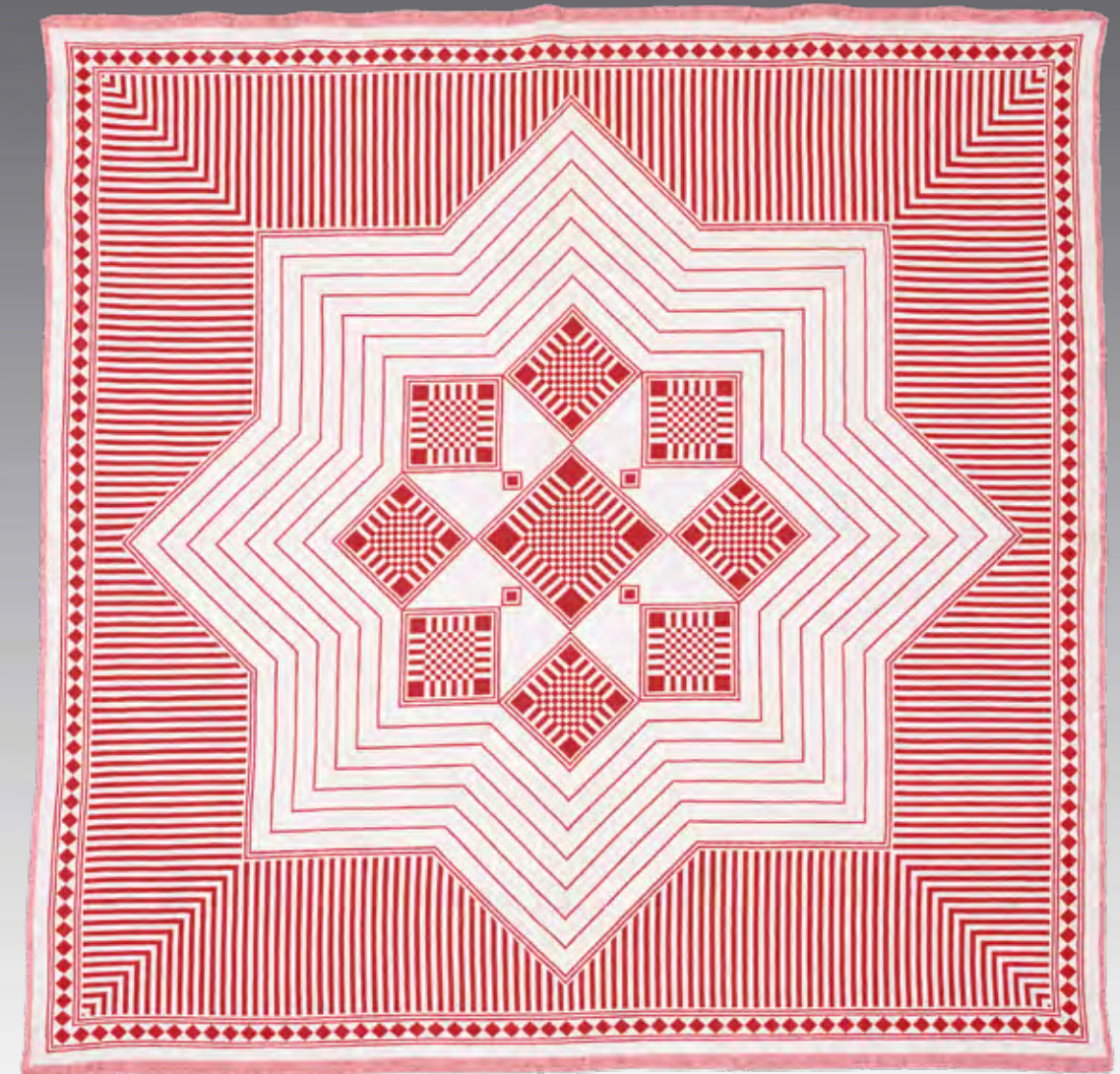
Designed by: Otto Prutscher, Vienna, around 1910
Executed by: Herrburger & Rhomberg, Dornbirn, Austria;
sold and distributed by Wiener Werkstätte

Cotton, double weave, hollow woven, 1 delicate stain
there fabric damaged (approx. 2 cm²), colour stain 13 cm
long and approx. 2 mm wide, otherwise very nice, slightly
used condition
132 x 132 cm

Provenance: private property, Austria
Ref.: C. Duit, H. & F. Schedlmayer (ed.): Otto Prutscher,
1880-1949, Architekt und Designer zwischen Tradition und
Moderne, vol. 2, p. 89



OTTO PRUTSCHER
1880 – Vienna – 1949
HERRBURGER-RHOMBERG for WIENER WERKSTÄTTE



29. TABLECLOTH

Designed by: Otto Prutscher, Vienna, around 1908
Executed by: Herrburger & Rhomberg, Vorarlberg, Austria;
sold and distributed by Wiener Werkstätte

Cotton, double weave, hollow woven, small spots and
slight signs of usage, otherwise excellent condition

131 x 131 cm

Provenance: private property, Austria

Ref.: C. Duit, H. & F. Schedlmayer (ed.): Otto Prutscher,
1880-1949, Architekt und Designer zwischen Tradition und
Moderne, vol. 2, p. 87



JOSEF HOFFMANN attr.
Brtnice 1870 – 1956 Vienna
J. & J. KOHN



30. SEATING GROUP

also known as "Half-moon" seating group
consisting of: 1 settee, 2 armchairs, 1 table

Designed by: Josef Hoffmann attr., Vienna, 1911
Executed by: J. & J. Kohn, model nos. 428/C, 428/F, Vienna,
from 1911 on

Bent beech and plywood, dyed to rosewood, professionally
repolished, upholstery renewed, re-covered in blue leather,
excellent condition

Settee: H 79 cm, SH 40 cm, W 134 cm, D 61 cm
Armchairs: H 77 cm, SH 40 cm, W 65 cm, D 60 cm
Table: H 70 cm, Ø 61.5 cm

Provenance: private property, Austria

Ref.: J. & J. Kohn sales catalogue, 1916, p. 54; G. Renzi, Il
mobile moderno, Gebrüder Thonet Vienna, Jacob & Josef
Kohn, Milan, 2008, p. 256



RUDOLF BACHER
1862 – Vienna – 1945

31. PORTRAIT OF A LADY

Signed and dated on lower right: R. BACHER 1920

Oil on canvas, small retouches, cleaned and varnished,
newly framed, very good original condition

Picture size: 113 x 109 cm
Frame size: 119 x 115 cm

Provenance: private property, Austria

After having studied at the Academy of Fine Arts in Vienna under Leopold C. Müller from 1882-1888, Bacher moved to Rome in 1890. In 1894, he became a member of the Vienna Künstlerhaus. In its founding year, he joined the Vienna Secession in 1897 and held its presidency in 1904/5 and 1912/14. The artist also contributed to numerous exhibitions. From 1903-1933, Rudolf Bacher taught as professor at the Academy.

His painting oeuvre is characterised by poetic tenderness and depth of feeling.

Ref.: R. Schmidt, Österreichisches Künstlerlexikon, Vienna, 1979, vol. 1, p. 96, vol. 2, p. 97



JOSEF HOFFMANN attr.
Brtnice 1870 – 1956 Vienna
J. & J. KOHN



32. HALLWAY COAT RACK

Designed by: Josef Hoffmann attr., Vienna, around 1906
Executed by: J. & J. Kohn, model no. 1368
Marked: verso paper label "J. & J. Kohn, Wien"

Bent beech and plywood, ebonized, surface professionally repolished, faceted mirror, first class condition

H 210 cm, W 146 cm, D 29 cm

Provenance: private property, Germany

Ref.: J. & J. Kohn sales catalogue, 1916, p. 86



JOSEF HOFFMANN attr.
Brtnice 1870 – 1956 Vienna
J. & J. KOHN



33. A PAIR OF FLOWER STANDS

Designed by: Josef Hoffmann attr., around 1910
Executed by: J. & J. Kohn, model no. H 1149
Marked: original company label: "J. & J. Kohn, Wien"

Bent beech and plywood, dyed to rosewood and repolished, surface professionally repolished, excellent condition

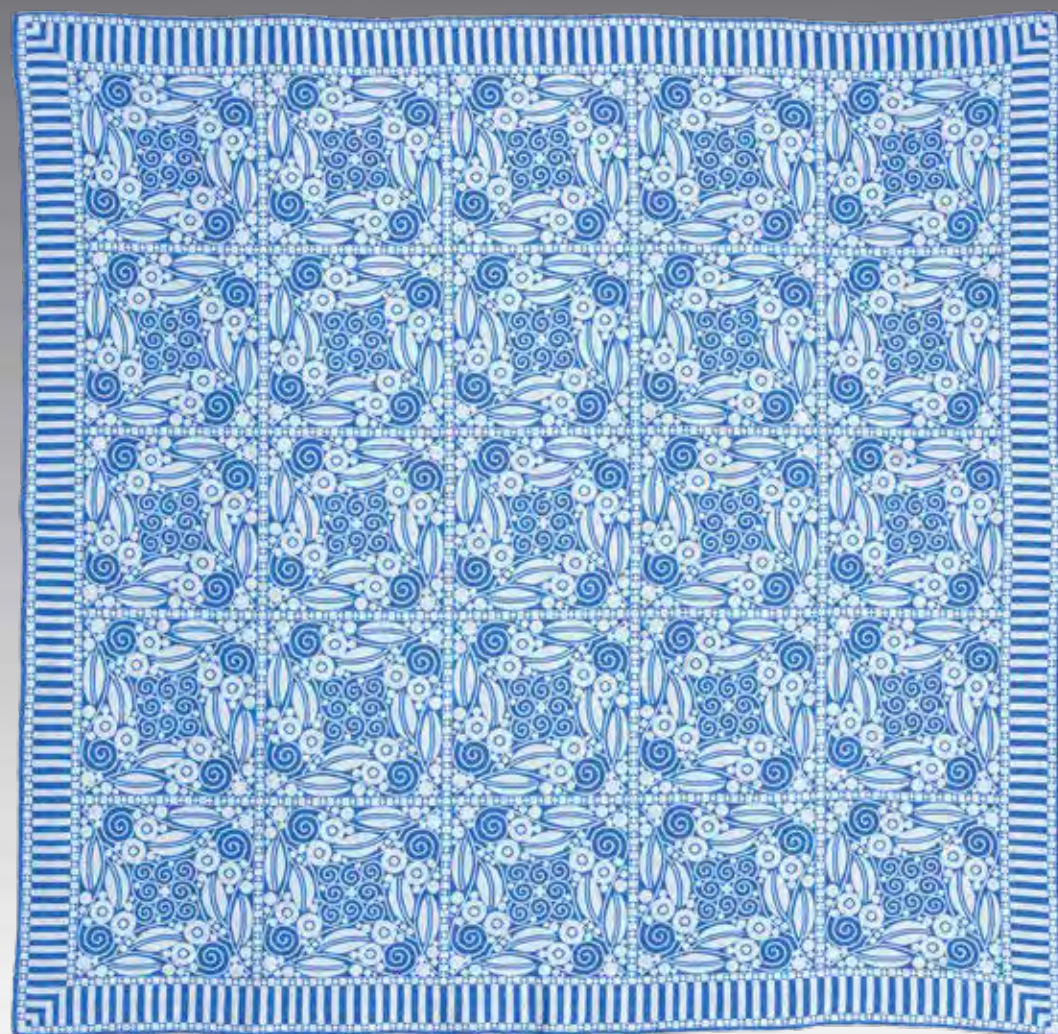
H 120 cm, Ø top 25 cm, Ø base 41 cm, Ø middle 33.5 cm
H 117 cm, Ø top 25 cm, Ø base 40 cm, Ø middle 34 cm

Provenance: private property, Austria

Ref.: J. & J. Kohn sales catalogue, 1916, p. 102



OTTO PRUTSCHER
1880 – Vienna – 1949
HERRBURGER-RHOMBERG for WIENER WERKSTÄTTE



34. TABLECLOTH

Designed by: Otto Prutscher, Vienna, around 1910
Executed by: Herrburger & Rhomberg, Dornbirn, Austria;
sold and distributed by Wiener Werkstätte

Cotton, hollow woven, blue, two small delicate stains
approx. 1.2 cm in diameter, otherwise very good slightly
used condition

110 x 110 cm

Provenance: private property, Austria
Ref.: comp. C. Duit, H. & F. Schedlmayer (ed.): Otto
Prutscher, 1880-1949, Architekt und Designer zwischen
Tradition und Moderne, vol. 2, p. 89



OTTO PRUTSCHER
1880 – Vienna – 1949
HERRBURGER-RHOMBERG for WIENER WERKSTÄTTE



35. TABLECLOTH

Designed by: Otto Prutscher, Vienna, around 1910
Executed by: Herrburger & Rhomberg, Dornbirn, Austria;
sold and distributed by Wiener Werkstätte

Cotton, hollow woven, no stains or repairs, slightly frayed at
the edges, otherwise very good condition

110 x 110 cm

Provenance: private property, Austria

Ref.: comp. C. Duit, H. & F. Schedlmayer (ed.): Otto
Prutscher, 1880-1949, Architekt und Designer zwischen
Tradition und Moderne, vol. 2, p. 89



JOSEF HOFFMANN attr.
Brtnice 1870 – 1956 Vienna
J. & J. KOHN



36. FLOWER ÉTAGÈRE

Designed by: Josef Hoffmann attr., Vienna, around 1908
Executed by: J. & J. Kohn, model no. 1017

Bent beech and plywood, dyed to rosewood and professionally repolished, very beautiful condition

H 84.5 cm, W 51 cm, D 51 cm

Provenance: private property, Austria

Ref.: J. & J. Kohn Italian sales catalogue, 1906, p. 98; G. Renzi, Il mobile moderno, Gebrüder Thonet Vienna, Jacob & Josef Kohn, Milan, 2008, pp. 224



JOSEF HOFFMANN attr.
Brtnice 1870 – 1956 Vienna
J. & J. KOHN



37. FLOWER ÉTAGÈRE

Designed by: Josef Hoffmann attr., Vienna, around 1908
Executed by: J. & J. Kohn, model no. 1018

Bent beech and plywood, small repairs, ebonised and professionally repolished some 20 years ago, original tray painted in blue, nice condition

H 89.5 cm, Ø 52 cm

Provenance: private property, Austria

Ref.: J. & J. Kohn Italian sales catalogue, 1916, p. 99



MAX KAHNER
Timisoara (Romania) 1878 – 1937 Klosterneuburg near Vienna



38. DANUBE IN THE MORNING SUN

Signed and dated on lower right: M. KAHNER 1919
inscription on stretcher frame: "Donauarm in der Morgensonne" and "Max Kahner Klosterneuburg Burgstr. 1"

Oil on canvas, cleaned, newly varnished several very small retouches, newly framed, excellent condition

Picture size: 62 x 80 cm
Frame size: 71 x 89 cm

Provenance: private property, Germany

MAX KAHNER
Timisoara (Romania) 1878 – 1937 Klosterneuburg near Vienna



39. LAKE TRAUNSEE

Signed on lower right: M. KAHNER 1933

Oil on canvas, cleaned and varnished, newly framed, excellent original condition

Picture size: 38 x 66 cm

Frame size: 45 x 73 cm

Provenance: private property, Austria

Ref.: H. Fuchs, Die österreichischen Maler des 19. Jahrhunderts, vol. 2, Vienna, 1973, K 94



40. ELEGANT SIX-BULB CHANDELIER

Designed and executed in: Vienna, around 1903

Provenance: private property, Austria

Brass, polished and stove enamelled some 20 years ago, six cut and faceted glass panels, solid glass balls, six green opaque glass shades, easily adjustable to room height, newly rewired, excellent condition

H 139 cm, Ø 52 cm



41. COAT AND HAT RACK

Designed and executed in: Vienna, around 1910

Brass, very beautiful old patina, varnished original drop tray, very good condition

H 196 cm, W 80 cm, D 40 cm

Provenance: private property, Austria

This hallway coat and hat rack stands out for its sculptural character. The particularly balanced design, the harmonious proportions and its masterful functionality are reminiscent of two outstanding Viennese architects. In my view, it was most likely designed by either Otto Prutscher or Josef Hoffmann. Despite intensive research, I have unfortunately not been able to find relevant documentation.

FRITZ NAGEL
born 1885 in Vienna
MÖBELFABRIK A. NAGEL



42. SERVING TABLE

Designed by: Fritz Nagel, Vienna, 1908/10
Executed by: Möbelfabrik A. Nagel

Solid rosewood and veneer, some small repairs, surface professionally repolished, cut and faceted glass, brass fittings, very good condition

H 73 cm, W 67 cm, D 51 cm

Fritz Nagel, son of furniture manufacturer A. Nagel, studied architecture at the School of Arts and Crafts

under Josef Hoffmann from 1903 to 1906, sometimes at the same time as Mauritius Hergesell. The two artists also repeatedly competed for prizes awarded by the magazine "Innendekoration".

This piece was created in his father's workshop.

Provenance: private property, Austria

Ref.: Das Interieur, XII, 1911, p. 48



43. SERVING TROLLEY

Designed and executed in: Vienna, around 1903

Mahogany wood solid and veneer, minor repairs, surface stained and professionally repolished, faceted and cut glass, 4 small hinged drop-down doors, brass fittings, 4 legs with small brass wheels, excellent condition
First-class Viennese cabinetmaking

H 78/77 cm, W 60/101 cm, D 50/91 cm

Provenance: private property, Austria





44. DINING ROOM

consisting of sideboard, credenza, extendable dining table, 6 chairs, long case clock

Designed by: Mauritius Hergesell, Vienna, around 1910

Executed by: Anton Hergesell, Vienna

Marked on key: ANTON HERRGESELL WIEN

Thuya burl veneer, mahogany solid and veneer, elaborate geometrical border inlays, brass fittings, partially stove-enamelled, cut and elaborately faceted door glazing, two

mirrors replaced, surface slightly sanded, retouched and professionally polished, first-class condition

Sideboard: H 199 cm, W 112.5 cm, D 54 cm

Credenza: H 199 cm, W 219 cm, D 74 cm

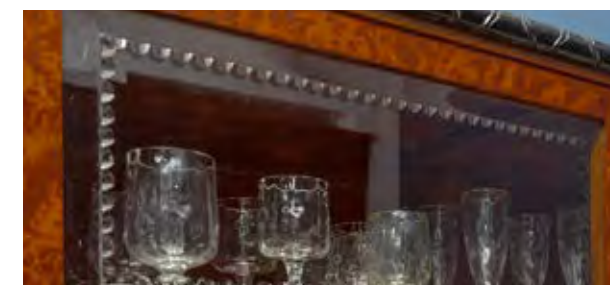
Dining table: H 77 cm, W 129.5/246 cm, D 109.5 cm

Chairs: H 95 cm, SH 48 cm, W 46 cm, D 55 cm

Long case clock: H 199 cm, W 51.5 cm, D 21.5 cm

Ref.: Das Interieur 1911, plate 5

Mauritius Hergesell studied architecture at the Vienna School of Arts and Crafts in the class of professor Josef Hoffmann from 1901 to 1905. The design for this dining room ensemble is strongly influenced by Hoffmann's then formal language. The pieces were manufactured in his father's workshop. Anton Hergesell was a renowned Viennese cabinetmaker, who had his salesroom at one of the best addresses in Vienna, Am Stephansplatz 9, just opposite the main entrance to St. Stephan's Cathedral.



MAURITIUS HERRGESELL
1883 – Vienna – 1952
ANTON HERRGESELL



ERNST STÖHR
1860 – St. Pölten – 1917



45. BATHING LADY

Signed and dated on lower left: E. Stöhr 1911
Addressee shown on the reverse:
Herrn Oskar Grubitsch, k. & k. Forst- und Domainenverwaltung
Wocheiner Feistritz, Krain, Wert Kronen 200

Oil on canvas, cleaned and varnished, newly framed, very
beautiful original condition

Picture size: 61.1 x 36.2 cm
Frame size: 66 x 41 cm

Provenance: private property, Austria

Ref.: Heinrich Fuchs, Die österreichischen Maler des 19.
Jahrhunderts, vol. 4, Vienna 1974, K 71

RUDOLF JUNK
1880 Vienna – 1943 Rekawinkel



46. BLOOMING TREES

Signed on lower left: R JUNK

Oil on cardboard, cleaned, varnished, newly framed, very
good original condition

Picture size: 40 x 26.5 cm
Frame size: 49 x 35 cm

Provenance: private property, Austria

Ref.: Vollmer, ed. 2, p. 580, exhibition catalogue
Österreichische Galerie, Hagenbund: Die verlorene
Moderne, 1993

HANS BOLEK
1890 – Vienna – 1978
JOHANN LÖTZ WITWE



47. VASE

Designed by: Hans Bolek, Vienna, 1916/17
Executed by: Johann Lötz Witwe, Klostermühle,
model no. 802
Shape: prod. no. III-802

Clear glass, white underlay interior, etched leaf pattern
décor, etched flashed glass

H 14.6 cm

Provenance: private property, USA

Ref.: H. Ricke (ed.), Löt, Böhmisches Glas 1880–1940,
Munich, 1989, vol. 1, p. 284; vol. 2, p. 233

OTTO PRUTSCHER attr.
1880 – Vienna – 1949
MEYR'S NEFFE



48. STEMMED WINE GLASS

Designed by: Otto Prutscher attr., Vienna, around 1908
Executed by: Meyr's Neffe, Adolfov near Vimperk

Colourless glass, blue overlay, cut décor, etched,
very good original condition
H 20.5 cm
Provenance: private property, Germany



MICHAEL POWOLNY
 Judenburg 1871 – 1954 Vienna
JOSEF HOFFMANN
 Brtnice 1870 – 1956 Vienna
WIENER WERKSTÄTTE



49. PLAQUE "BUGRA LEIPZIG 1914"

Design: Plaque: Michael Powolny, 1914
 Leather presentation box: Josef Hoffmann
 Executed by: Wiener Werkstätte, 1914
 Marked: MP, WIENER WERK STÄTTE

Cast bronze, designer monogram MP, inscription on reverse: "Internationale Ausstellung für Buchgewerbe und Graphik, Leipzig 1914, Österreichisches Haus" (International Exhibition for Book Trade and Graphics, Leipzig 1914,

Austrian House); original leather presentation box with gold embossing, very beautiful condition

Plaque: H 7.8 cm, W 6 cm
 Box: H 11.6 cm, W 9.3 cm

Provenance: private collection, Austria
 Ref.: E. Frottier, Michael Powolny, Keramik und Glas aus Wien 1900–1950, cat. raisonné no. WV 580

MARIA WEISSENBERG
 1900 – Vienna – 1967
WIENER WERKSTÄTTE



50. TWO PORTFOLIOS

Designed by: Maria Weißenberg, Vienna, 1920
 Executed by: Wiener Werkstätte

Paper
 Large portfolio: 48 x 49.5 cm, small portfolio: 18.5 x 23.5 cm

Provenance: private property, Austria
 Ref.: Wiener Werkstätte archives at the Austrian Museum of Applied Arts (MAK) Vienna, design drawing inv. no. KI 9050-1

GERTRAUD REINBERGER-BRAUSEWETTER
Vienna 1903 – 1992 Hinterbrühl



51. ADAM AND EVE IN THE GARDEN OF EDEN

Signed: on top: 1918, GB, on bottom: GERTRAUD
BRAUSEWETTER 1918

Woodcut, cleaned, newly framed, very good condition

Picture size: 40 x 42 cm

Frame size: 52 x 54 cm

Provenance: private property, United Kingdom

Ref.: Ref.: Heinrich Fuchs, Die österreichischen Maler des 20.
Jahrhunderts, vol. 3, K 241

GERTRAUD REINBERGER-BRAUSEWETTER
Vienna 1903 – 1992 Hinterbrühl



52. DANCER

Signed on lower left: Gertraud Reinberger

Woodcut, cleaned, excellent condition

Picture size: 51 x 21 cm
Frame size: 73 x 41 cm

Provenance: private property, Austria

Ref.: Heinrich Fuchs, Die österreichischen Maler des 20.
Jahrhunderts, vol. 3, K 241

FRANZ JASCHKE
1862 – Vienna – 1910



53. VIEW OF THE OLD DIANABAD ON
DONAULÄNDE

Signed: F. Jaschke, titled on an old paper label on verso:
"Jaschke, I., F. J. Quai, 13/Donaulände in der Spätsonn"

Oil on canvas, cleaned and varnished, newly framed,
excellent condition

Picture size: 68.5 x 63 cm
Frame size: 73.5 x 67.5 cm

A similar painting, "Donaulände im Sommer", created
in 1903, was shown in the 2014/15 exhibition "Im Lichte
Monets" at Belvedere Vienna.

Provenance: private property, Austria

Ref.: H. Fuchs, Die österreichischen Maler des 19.
Jahrhunderts, vol. 2, Vienna, 1973, p. K 87

OSWALD GRILL
1878 – Vienna – 1964



54. SUNSET AT LAKE ATTERSEE

Signed on lower left: O.GRILL, paper label on verso:
Grill Attersee, Maria Michler

Oil on canvas, small retouches, cleaned and varnished,
newly framed, excellent original condition

Picture size: 79.5 x 95 cm
Frame size: 83.5 x 99 cm

Provenance: private property, Austria

Ref.: H. Fuchs, Die österreichischen Maler des 19.
Jahrhunderts, ed. 2, Vienna, 1973, K 27

CARL MOLL
1861 – Vienna – 1945

55. IN PRATER

Cat. raisonné no. GE 332, around 1922
Monogrammed on lower right: CM

Oil on cardboard, cleaned and varnished, newly framed,
excellent original condition

Picture size: 35.5 x 35.5 cm
Frame size: 49.5 x 49.5 cm

“Prater” is the largest public park in Vienna

Provenance: private property, Austria, 1974, 1991 and 1994
at Dorotheum, Vienna

Ref.: catalogue raisonné Carl Moll, Österreichische Galerie
Belvedere (ed.), Vienna, 2020, ill. p. 229; H. Fuchs, Die
österreichischen Maler des 19. Jahrhunderts, Vienna, 1973,
vol. 3, K 53; M. Pabst, Wiener Graphik um 1900, Munich,
1984, p. 118, ill. 119



CARL MOLL
1861 – Vienna – 1945

56. ROSES IN FRONT OF A WINDOW

Cat. raisonné no. GE 384, around 1928
Monogrammed on lower right: CM

Oil on canvas, cleaned and varnished, newly framed,
excellent original condition

Picture size: 60 x 60 cm
Frame size: 68 x 68 cm

Provenance: private property, Austria, 1962 Anton Klement,
Vienna - 1996 Dorotheum, Vienna

Ref.: catalogue raisonné Carl Moll, Österreichische
Galerie Belvedere, Vienna, 2020, ill. p. 229; H. Fuchs, Die
österreichischen Maler des 19. Jahrhunderts, vol. 3, Vienna,
1973, K 53; M. Pabst, Wiener Graphik um 1900, Munich,
1984, p. 118, ill. 119



OTTO PRUTSCHER
1880 – Vienna – 1949
OESTERREICHER WIEN



57. CANDLEHOLDER

Designed by: OTTO PRUTSCHER
Executed by: Oesterreicher Wien
Marked: OESTERREICHER WIEN ENTW. PROF. OTTO PRUTSCHER, maker's mark M&C; 800, Austrian hallmark – head of tucan (W for Vienna, 4 for 800/1000)

Silver, hammered, polished, very nice original condition

H 6 cm, W 6.5 cm, D 6.5 cm

Provenance: private property, USA (from the estate of Jacqueline Loewe Fowler)



JOSEF HOFFMANN
Brtnice 1870 – 1956 Vienna
WIENER WERKSTÄTTE



58.1. ASHTRAY

Designed by: Josef Hoffmann, before 1929
Executed by: Wiener Werkstätte, model no. M 0558
Marked: JH, WIENER WERK STÄTTE (3 lines), Austrian hallmark – head of hoopoe (W for Vienna, 2 for 900/1000), 900, MADE IN AUSTRIA
Silver, chased and hammered, excellent condition
H 3 cm, Ø 9 cm

As of 1900, J. Hoffmann repeatedly demonstrated the radical reduction of his functional design, as manifested in this ashtray created in the mid-1920s.

Provenance: private property, Austria
Ref.: Wiener Werkstätte photographic archives at the Museum of Applied Arts (MAK), Vienna, photo inv. no. KI 12075-3



58.2. SILVER BOTTLE STOPPER

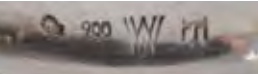
Designed by: Josef Hoffmann, Vienna, before 1924
Executed by: Wiener Werkstätte, Vienna, from 1924 on
Marked: JH, WW, 900, Austrian hallmark – head of hoopoe (W for Vienna, 2 for 900/1000)

Silver, chased and hammered, excellent original condition

H 3 cm, Ø 6 cm

Provenance: private property, Austria

Ref.: Wiener Werkstätte archives at the Museum of Applied Arts (MAK), Vienna, design drawing inv. no. KI 12094-32



JOSEF HOFFMANN
Brtnice 1870 – 1956 Vienna
WIENER WERKSTÄTTE



59. A PAIR OF VASES

Designed by: Josef Hoffmann, Vienna, before 1920
Executed by: Wiener Werkstätte, from 1920 onwards, model no. M 3067
Marked: JH, WIENER WERK STÄTTE (3 lines), MADE IN AUSTRIA

Brass, chased and hammered, hand polished, excellent original condition
H 19.2 cm, H 19 cm

Provenance: private property, USA and Austria
Ref.: A contemporary photograph is preserved in the Wiener Werkstätte photographic archives at the Austrian Museum of Applied Arts (MAK), Vienna, inv. no. WWF 114-10-1



JOSEF HOFFMANN
Brtnice 1870 – 1956 Vienna
WIENER WERKSTÄTTE



60. A PAIR OF VASES FOR VIOLETS

Designed by: Josef Hoffmann, Vienna, around 1925
Executed by: Wiener Werkstätte, model no. M va 30
Marked: JH, WIENER WERK STÄTTE (3 lines), Made in Austria

Brass, chased and hammered, polished, very nice original condition

H 17 cm, H 16.6 cm

Provenance: private collection, Austria
Ref.: A contemporary photograph is preserved in the Wiener Werkstätte archives at the Austrian Museum of Applied Arts (MAK), Vienna, inv. no. WWF 114-8-1



FRANZ HAGENAUER
1906 – Vienna – 1986
WERKSTÄTTE HAGENAUER



61. HORSE HEAD

Designed by: Franz Hagenauer, Vienna, 1939
Executed by: Werkstätte Hagenauer, Vienna, from 1939 to 1960, model no. 4785
Marked: HAGENAUER WIEN, MADE IN VIENNA AUSTRIA, WHW in circle, original Hagenauer sales label with model no. 4785

Brass, cast and patinated, very beautiful original patina, excellent condition

H 22 cm, W 30 cm, D 5.5 cm

Sincere thanks to Dr Maria-Luise Jesch, Austrian Museum of Applied Arts Vienna, Hagenauer archives, for this information.
Provenance: private property, Austria
Ref.: comp. contemporary photograph in the Hagenauer archives at the Austrian Museum of Applied Arts (MAK), Vienna, inv. no. HAF 137

FRANZ HAGENAUER
1906 – Vienna – 1986
WERKSTÄTTE HAGENAUER



62. BIG DUCK

Designed by: Franz Hagenauer, Vienna, 1954
Executed by: Werkstätte Hagenauer, model no. 9659
Marked: WHW, HAGENAUER WIEN, Made in Austria, Handmade

Walnut, carved, eyes inlay in maple and ebony, brass cast, excellent original condition

H 17.6 cm, L 10 cm, W 4.5 cm

Provenance: private property, Germany

Ref.: comp. contemporary photograph in the Hagenauer archives at the Austrian Museum of Applied Arts (MAK), Vienna, inv. no. HAF 1417

KARL and FRANZ HAGENAUER
1898 – Vienna – 1956
1906 – Vienna – 1986
WERKSTÄTTE HAGENAUER



63. MIRROR "DIANA ON HORSE"

Designed by: Karl Hagenauer 1927, taken up by Franz Hagenauer, Vienna 1981
Executed by: Werkstätte Hagenauer, between 1981 and 1987, modell no. 1177
Marked: WHW in a circle, HAGENAUER WIEN, MADE IN AUSTRIA

Nickel-plated brass, glass, excellent original condition

H 46.6/35 cm, W 20.6 cm

The motif of Diana on horseback by Karl Hagenauer, designed for a bookend in 1927 as model number 1487,

was taken up by Franz Hagenauer, adapted and used on a mirror, produced from 1981 as model number 1177.

Sincere thanks to Dr Maria-Luise Jesch, Austrian Museum of Applied Arts Vienna, Hagenauer archives, for this information.
Provenance: private property, Austria

Ref.: A contemporary photograph has been preserved in the Hagenauer archives at the Austrian Museum of Applied Arts (MAK), Vienna, inv. no. HAF 819

FRANZ HAGENAUER
1906 – Vienna – 1986
WERKSTÄTTE HAGENAUER



64. RECLINING WOMAN WITH MIRROR

Designed by: Franz Hagenauer, Vienna 1981
Executed by: Werkstätte Hagenauer, Vienna, from 1981 to 1987, model no. 1144, 4485
Marked: Handmade, HAGENAUER, WIEN, MADE IN AUSTRIA, WHW in circle

Nickel-plated brass and cast brass, soldered joint between

hand and mirror, otherwise very good original condition
H 22 cm, W 46 cm, D 8 cm

Resumption and variation of Reclining Woman with Small Handheld Mirror, model number 4485 of 1937, reinterpreted by Franz Hagenauer in 1981 as Reclining Woman with Mirror, model number 1144.

Sincere thanks to Dr Maria-Luise Jesch, Austrian Museum of Applied Arts Vienna, Hagenauer archives, for this information.
Provenance: private property, Austria
Ref.: Hagenauer archives, Vienna, calculation book 13, model no. 1144, 4485



65. DANCER WITH RIBBON

Designed by: Werkstätte Hagenauer, Vienna
Executed by: Werkstätte Hagenauer, Vienna, around 1935
Marked: WHW in circle, HAGENAUER WIEN, MADE IN AUSTRIA

Wood, carved, copper, very good original condition

H 75 cm

Provenance: private property, USA





66. CENTREPIECE

Designed by: Werkstätte Hagenauer, Vienna, 1930
Executed by: Werkstätte Hagenauer, Vienna
Marked: WHW in circle, MADE IN AUSTRIA (base)

Brass cast and chased, excellent original condition

H 12.5 cm, Ø 25 cm

Provenance: private property, Austria

Ref.: comp. contemporary photograph in the Hagenauer archives at the Austrian Museum of Applied Arts (MAK), Vienna, inv. no. HAF 1606



67. SPIEGEL

Designed by: Oswald Haerdtl, Vienna, 1948
Executed by: Max Welz, model no. OH1
Verso: original company label, O. H. 1

Solid walnut, carved, gilt, small repairs, very beautiful original condition

H 80 cm, W 66 cm

In our 2023 Maastricht catalogue, we offered a magnificent mirror by O. Haerdtl that was decorated with the same carvings as this mirror, featuring the following dimensions: H 70 cm, W 175 cm.

Provenance: private property, Austria
Ref.: comp. Bogner, Kristan, Der späte Josef Hoffmann, Vienna, 2023, p. 159, 2023 beletage Maastricht catalogue, catalogue no. 67



68. GRAND 374-PIECE SILVER CUTLERY SET

Designed and executed by: J. C. Klinkosch, Vienna, around 1950

Marked: 800, knight's helmet with visor (Klinkosch company's mark), Austrian hallmark – head of toucan from 1922 onwards (W for Vienna, 4 for 800/1000)

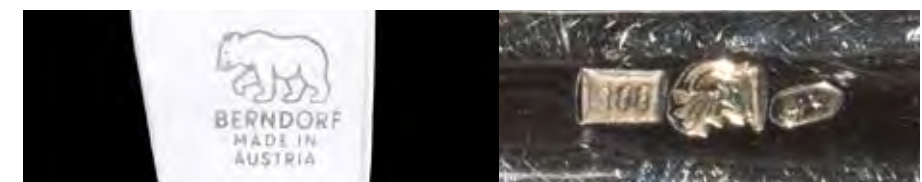
30 large knives, forks and spoons, 30 medium-sized knives, 30 small knives, 42 medium-sized forks, 30 dessert forks (3 prongs), 12 starter forks (4 prongs), 30 medium-sized spoons,

30 small spoons, 18 mocha spoons, 12 spoons (small, square), 12 ice-cream spoons, 12 large and 12 small fish knives, 2 large serving/meat forks, 2 small serving forks, 4 salad servers, 2 cake servers, 2 large and 2 small ladles

max. L 29 cm

Weight: approx. 17.2 kg

Provenance: private property, Austria



JOSEF PILLHOFER
1921 – Vienna – 2010



69. FIVE-PART FIGURE I

1970
Edition of 10
unsigned

Bronze cast, very beautiful original patina
H 17 cm, W 15 cm, D 18 cm
Provenance: private property, Austria

Ref.: Foldable catalogue: PILLHOFER. Galerie auf der Stubenbastei, Vienna, 5 - 30 May 1970, illustration inside (incorrectly referred to as 'Aggressive Figur'). <http://www.josefpillhofer.at/de/skulpturen/skulpturenverzeichnis/?o=358&a=all> (accessed on 4 June 2024)



JOSEF PILLHOFER
1921 – Vienna – 2010



70. STUDY ON A NARROW STONE II

1999
Edition of 10
unsigned

Bronze cast, very beautiful original patina
H 30.5 cm, W 4.5 cm, D 4.7 cm
Provenance: private property, Austria

Ref.: <http://www.josefpillhofer.at/de/skulpturen/skulpturenverzeichnis/?o=646&a=all> (accessed on 4 June 2024)



JOSEF PILLHOFER
1921 – Vienna – 2010



71. CHARLIE CHAPLIN

Edition of 6 pieces

Monogrammed: P

Bronze cast, very beautiful original patina
H 43 cm, W 10 cm, D 11 cm

Provenance: private property, Austria

Lit.: comp. Josef Pillhofer exhibition catalogue. Das Gestalt hafte in der Natur. Plastiken und Zeichnungen, Mälzerei und Garten des Freiberg er-Hauses, Mürzzuschlag 1981, cat. no. 35



ALFRED CZERNY
1934 – Vienna – 2013



72. STANDING FEMALE WITH HAIRDO

1957

Marked: A C

Bronze cast, very beautiful original patina

H 55 cm

Base: 9.5 x 9 cm

Provenance: private property, Austria

Ref.: Geiserich E. Tichy (ed): Alfred Czerny, Auf der Suche nach zeitloser Schönheit, Verlag Neumann, Vienna 2004, p. 158



| ARTISTS AND COMPANIES | Cat.no. | Page |
|---|---|---|
| BACHER, Rudolf | 31 | 44-45 |
| BOLEK, Hans | 47 | 64 |
| CZERNY, Alfred..... | 72 | 93 |
| FIX, Robert..... | 12 | 19 |
| FRIEDRICH OTTO SCHMIDT | 15 | 22-23 |
| GILGEN, Gustav..... | 11 | 18 |
| GRILL, Oswald..... | 54 | 71 |
| GURSCHNER, Gustav..... | 18 | 28-29 |
| HAERDTL, Oswald..... | 67 | 87 |
| HAGENAUER, Franz..... | 61-64 | 80-83 |
| HAGENAUER, Karl..... | 63 | 82 |
| HAGENAUER, Werkstätte..... | 61-66..... | 80-86 |
| HERRMANN, J. & J. | 21 | 32-33 |
| HERRBURGER-RHOMBERG | 13, 14, 28, 29, 34, 35 | 20-21, 40-41, 48-49 |
| HERRGESELL, Anton | 44 | 58-61 |
| HERRGESELL, Mauritius..... | 44 | 58-61 |
| HOFFMANN, Josef..... | 10, 22, 23, 30, 32, 33, 36, 37, 49, 58-60..... | 17, 34-35, 42-43, 46-47, 50-51, 66, 77-79 |
| HOFSTÖTTER, Franz..... | 2 | 8-9 |
| HOLUBETZ, Robert | 4 | 11 |
| JASCHKE, Franz..... | 53 | 70 |
| JUNK, Rudolf..... | 46 | 63 |
| K. K. KUNSTERZIESSEREI WIEN | 18 | 28-29 |
| KAHRER, Max | 26, 38, 39 | 38, 52-53 |
| KAMMERER, Marcel..... | 27 | 39 |
| KLIMT, Georg | 6 | 13 |
| KLINKOSCH, J. C. | 68 | 88-89 |
| KOHN, J. & J. | 30, 32, 33, 36, 37..... | 42-43, 46-47, 50-51 |
| LOOS, Adolf | 15, 16 | 22-25 |
| LÖTZ WITWE, Johann | 2, 3, 4, 24, 25, 47 | 8-11, 36-37, 64 |
| MEYR'S NEFFE | 48 | 65 |
| MÖBELFABRIK A. NAGEL..... | 42 | 56 |
| MOLL, Carl..... | 55, 56..... | 72-75 |
| NAGEL, Fritz..... | 42 | 56 |
| PILLHOFFER, Josef..... | 69-71..... | 90-92 |
| PORTOIS & FIX..... | 12 | 19 |
| POSPISCHIL, Anton..... | 6, 10..... | 13, 17 |
| POWOLNY, Michael..... | 49 | 66 |
| PRAG-RUDNIKER KORBWARENFABRIK | 19, 20 | 30-31 |
| PRUTSCHER, Otto..... | 13, 14, 28, 29, 34, 35, 48, 57 | 20-21, 40-41, 48-49, 65, 76 |
| REINBERGER-BRAUSEWETTER, Gertraud | 51, 52 | 68-69 |
| SCHMIDT, Miksa | 16 | 24-25 |
| SCHMIDT, Wilhelm..... | 19 | 30-31 |
| SCHOOL of PROF. JOSEF HOFFMANN | 19 | 30 |
| STÖHR, Ernst..... | 45 | 62 |
| STOITZNER, Josef | 1 | 6-7 |
| TESCHNER, Richard..... | 24, 25..... | 36-37 |
| THONET, Gebrüder | 27 | 39 |
| VOLLMER, Hans | 11, 19 | 18, 30 |
| WAGNER, Otto..... | 5 | 12 |
| WEISSENBERG, Maria | 50 | 67 |
| WELZ, Max..... | 67 | 87 |
| WIENER KUNSTGEWERBESCHULE | 7, 8 | 14-15 |
| WIENER WERKSTÄTTE | 13, 14, 22, 23, 28, 29, 34, 35, 49, 50, 58-60 | 20-21, 34-35, 40-41, 48-49, 66-67, 77-79 |



Barta Managing Art Insurance
provides great insurance at
best price for art & collectables.

Find out more on www.bartaart.com



Warum Kunst bei BARTA versichern?

Barta engagiert sich für den Schutz und die Erhaltung von Kunstgegenständen. Es beraten Sie erfahrene Kunsthistoriker und Experten. Regelmäßig wird Ihre Kunstsammlung dem aktuellen Marktwert angepasst. Barta versichert gegen alle Risiken und Gefahren, denen Ihre Kunstwerke ausgesetzt sind und beinhaltet Risiken, die mit herkömmlichen Versicherungen nicht abgedeckt sind.

Barta bietet länderübergreifende Deckungskonzepte und Schadensregulierungen.

Why insure art at BARTA?

Barta is committed to the protection and the Preservation of works of art. We are experienced art historians and our experts are here to advise you. Your art collection will be regularly appraised and changed to reflect the current market value. Barta insures against All Risks to include the perils to which your artworks are exposed. This will include Risks which are generally not covered under conventional insurances.

International cooperation means that Barta offers a global insurance concept for your art incl. worldwide loss handling.

For further assistance please call Renate Schwarz-Barta:
+43 1 532 08 40 | rs@bartaart.com





bel etage